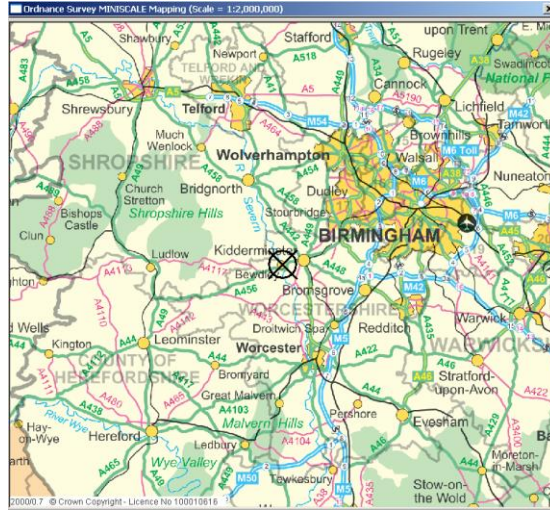


DiPS OS Mapping - Choosing the Detail Required

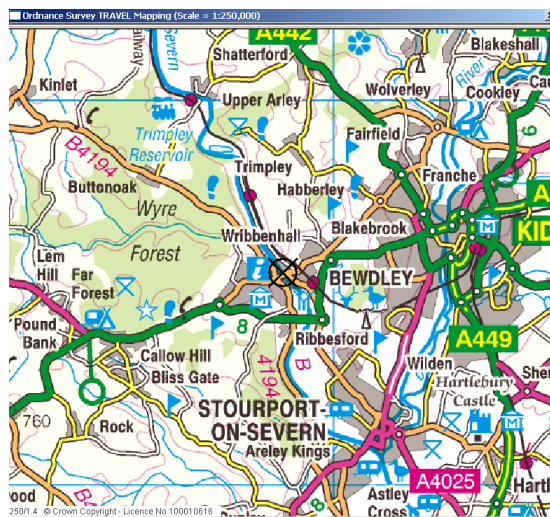
There are three levels of Ordnance Survey mapping normally associated with the standard package. Maps can be displayed at scales from 1:2,000,000 (MiniScale), to 1:250,000 (250K) and then 1:50,000 (50K). These files and folders can be downloaded using the OS Basic Maps Link and the OS 50K Maps Link on the web page.

From May20 releases, the MiniScale and 250K Raster folders are included in the software setup.exe install and so do not require a separate download necessarily

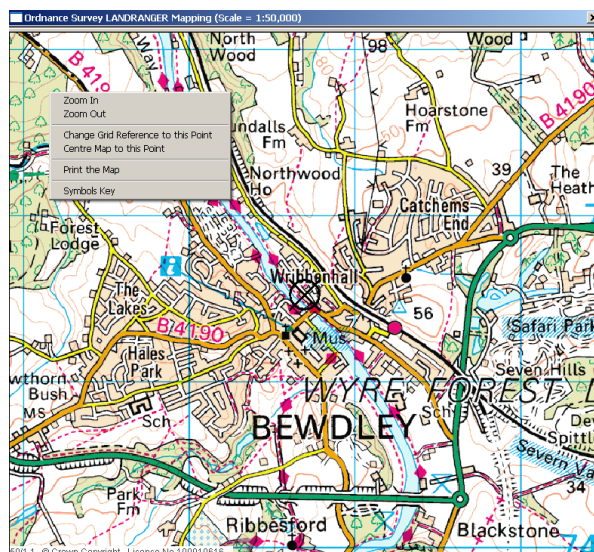
Example of a MiniScale map



Example of a 250K map



Example of a 50K map

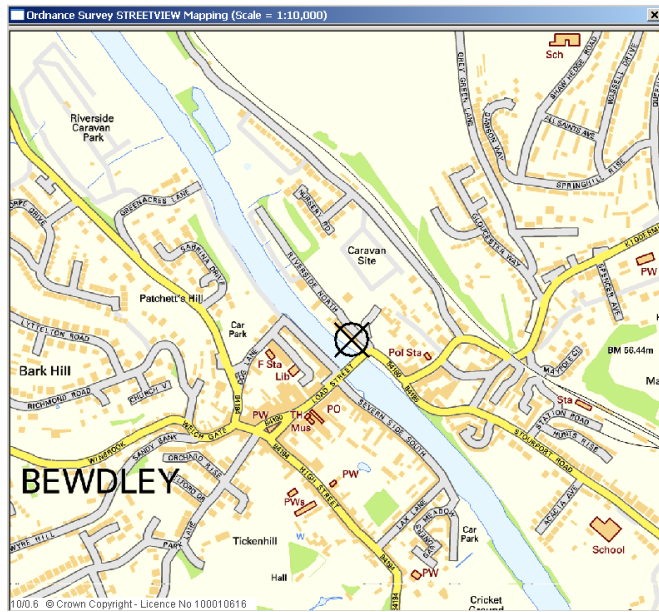


In addition to these Levels DiPS can also employ two more detailed map levels if required.

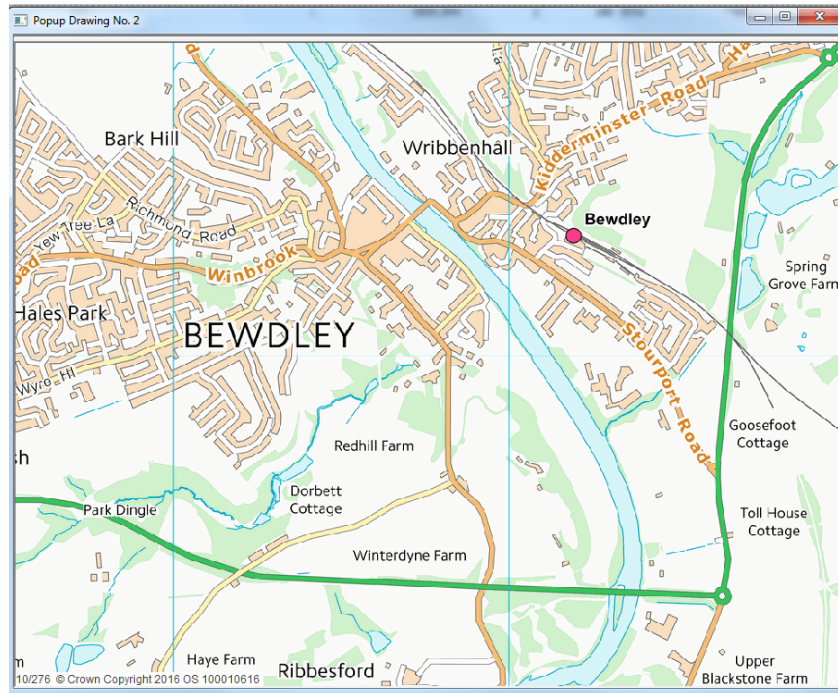
Detailed Street Level mapping will show road names and individual buildings.

As another option an intermediate 10K scale which is a level below 50K and will show streets with some main road names

Example of a Street View map



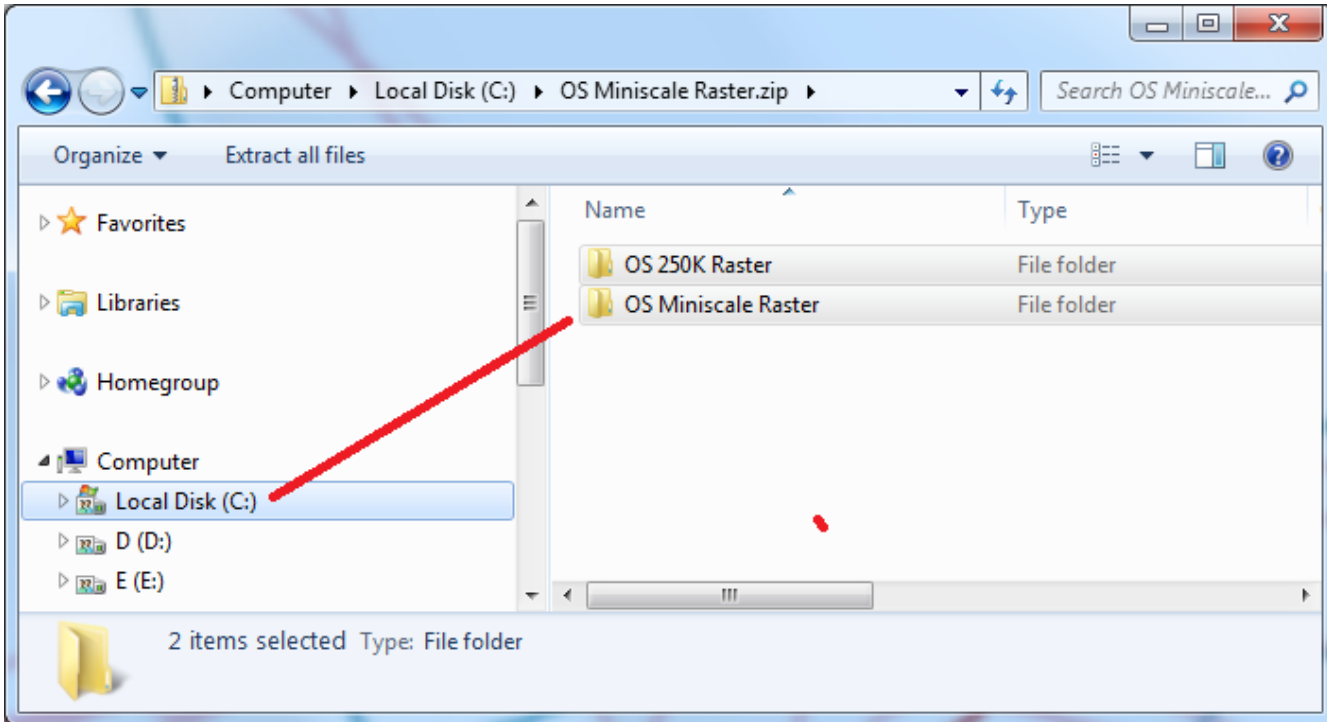
Example of a 10K map



Installing OS Mapping from Web Site Downloads

After downloading any of the the ZIP files just open and then copy and paste the folders directly into local disk C: (or another drive if you have selected one for all your maps)

Select only the drive and not a folder as the files are copied into folders as required.



Please check that any drive chosen has enough working disk space prior to copying. This is not normally an issue on newer PCs but please note that depending upon the levels chosen it may require GIGABYTES of free space!

The standard MiniScale, 250K and 50K maps require 20GB of free space for an initial installation. With the StreetView and 10K added it can rise by another 16GB.

If you are in any doubt as to what you require or need any further help please contact us at support@dips.co.uk